



Mobile Domino for BlackBerry®

Mobile Domino for BlackBerry® (MDB) leverages BlackBerry's® push technology framework to dramatically reduce the time and cost involved in extending IBM® Lotus® Domino® applications to BlackBerry® devices.



Overview

Mobile Domino for BlackBerry® comprises a server component and a native Java ME application which runs on the BlackBerry® device. Data stored in any Domino-based application can be extended to devices running the Java ME component. By leveraging the local data store on the BlackBerry®, content can be accessed regardless of device network connectivity.

Server Functionality

The databases residing on the IBM® Lotus® Domino® server are comprised of the Mirror database and the BlackBerry® Sync Profiles database. These two databases reside on any IBM® Lotus® Domino® server in your environment. This server doesn't have to be your messaging server, or the same server which houses your corporate databases or your BlackBerry® Enterprise Server (BES).

The Mirror database is used to store data during the synchronization process. There is no user interface or interaction with this database. The BlackBerry® Sync Profiles database contains the following profile documents which are used to control the redirection of data:

- BES profile
- Database profiles
- User profiles
- Global administration settings

Device Functionality

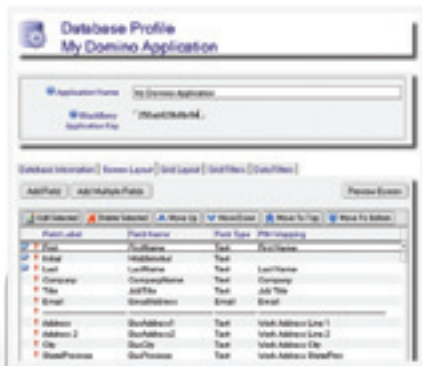
The application running on the device is a native Java ME application. Once deployed on the device, the user will have a custom, unique icon displayed to launch the application. Once launched, the application opens to display the default list. A custom banner icon and "application name" is displayed.

The "Find" functionality allows the user to quickly filter data using type-ahead. The type-ahead filters content based on any column listed in the grid. This gives users the ability to quickly locate data. The status bar displays the total number of records, as well as the number of records displayed.

Dynamic grid filters allow content to be filtered based on any number of keywords. This allows the user to only display data relevant to them. This option can be turned on or off on the database profile document.

The "Menu" options allow users to perform various actions. The actions will vary depending on the data on the selected record. For example, the "Email" menu option is only available if the selected record has a valid email address.

Integration with BlackBerry® maps is also available via the menu actions.





Point Alliance and BlackBerry®

As a BlackBerry® Alliance Program member, Point Alliance has been implementing, upgrading and migrating BlackBerry® Enterprise Servers (BES) for our clients since 2002. Our BlackBerry® Architects work closely with our clients to design solutions that will seamlessly integrate with their back end data.

Point Alliance develops and integrates custom Java ME BlackBerry® applications with back end databases such as IBM® Lotus® Domino®, Microsoft® SQL Server, IBM® DB2®, and Oracle®.

This expertise comes from both understanding the BlackBerry® Enterprise Server as well as complex email and network infrastructures. Point Alliance's relationship with Research in Motion dates back to the BES beta program and Point Alliance staff have participated in the coding of BES service pack releases.

We have implemented BlackBerry® Enterprise Servers for clients as small as one user to over thousands of users. Our goal is to transfer as much knowledge as possible during these projects, so that the client is self-sufficient once the environment has been configured and is up and running in production.

Professional Services

Our services include:

- Custom application development
- BES implementation
- Training
- Support
- BES upgrades
- BES disaster recovery planning
- Network analysis

Sample BlackBerry Projects

Point Alliance has completed BlackBerry® projects across North America in the following areas:

- BES implementations and BlackBerry® roll outs
- BES upgrades/migrations
- BES disaster recovery planning
- Extending applications to BlackBerry®
- CRM applications
- Property management applications
- Time and billing applications
- Service request applications

